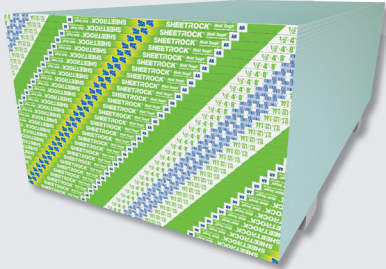


USG SHEETROCK® BRAND MOLD TOUGH® AR FIRECODE® X PANELS



DESCRIPTION

USG Sheetrock® Brand Mold Tough® AR Firecode® X Panels are available in UL Type Designation AR, and were designed and tested to offer greater resistance to surface indentation and impact damage than standard USG Sheetrock® Brand Gypsum Panels. These panels are a low-cost alternative to other systems for partitions that require greater impact resistance, are UL Classified as to fire resistance and meet the requirements for Type X in the model building code.

USG Sheetrock® Brand Mold Tough® AR Firecode® X Panels have a noncombustible, moisture-resistant core that is encased in moisture- and mold-resistant, 100 percent recycled green-face and brown-back papers. The face paper is folded around the long edges to reinforce and protect the core, and the ends are square cut and finished smooth. Long edges of panels are tapered, allowing joints to be reinforced and concealed with a USG joint treatment system.

Note: For projects requiring superior abuse resistance, specify USG Sheetrock® Brand Mold Tough® VHI Firecode® X Panels. The panels are UL Classified for fire resistance and can be used in any UL Design where Type X panels are listed. On the face along the long edge of each panel, the UL Type Designation is printed for easy identification after installation.

INTENDED FOR

- Areas where moisture and mold resistance is desired
- Commercial applications where greater resistance to indentation and impact damage are required
- New or repair and remodel construction
- Fire-rated wall assemblies

LIMITATIONS

1. Avoid sustained exposure to temperatures exceeding 125°F (52°C).
2. Maximum framing spacing for walls is 16 in. o.c.
3. Avoid exposure to excessive, repetitive or continuous moisture before, during and after installation. Eliminate sources of moisture immediately.
4. Must be stored off the ground and under cover in accordance with Gypsum Association publication GA-801, *Handling and Storage of Gypsum Panel Products*.
5. For abuse-resistant construction over steel framing, minimum 20-gauge drywall steel studs (0.0312 in. design thickness) as defined by the Steel Stud Manufacturers Association (SSMA) are required.
6. Application of USG Sheetrock® Brand Mold Tough® AR Firecode® X Panels over insulating blanket, installed continuously across the framing members is not recommended. Blankets should be recessed and blanket flanges attached to sides of studs or joists.
7. Not suitable for use as a substrate for tile in wet areas such as tubs and showers, gang showers and other areas subject to direct water exposure.
8. Use as a tile substrate is limited to tile installed according to the most current TCNA and ANSI specifications. Please consult with the adhesive and tile manufacturers for their recommendations for maximum size and weight parameters for use with gypsum board.

**INTERIOR INSTALLATION, FINISHING
AND DECORATING**

INSTALLATION

USG Sheetrock® Brand Mold Tough® AR Firecode® X Panels are by design stronger and have greater surface hardness than standard 5/8 in. Type X panels. Because of this, they are heavier and will be expectedly more difficult to install. Slower installation production rates should be accounted for in job planning.

Installing USG Sheetrock® Brand Mold Tough® AR Firecode® X Panels on studs fabricated with steel thinner than true 20-gauge drywall steel studs (0.0312" design thickness) as defined by the SSMA may result in increased fastener strip-out, improper screwhead seating, or other related conditions. The equivalent gauge framing is also more sensitive to screw configuration and thread pitch. Due to the wide variety of "equivalent" or "effective" gauge studs and the variation by manufacturer in actual steel thickness, USG has no specific recommendations for installing USG Sheetrock® Brand Mold Tough® AR Firecode® X Panels on equivalent gauge steel studs.

FINISHING AND DECORATING

Painting products and systems that comply with recommendations and requirements in Appendixes of ASTM C840 should be used. For priming and decorating with paint, texture or wall covering, follow manufacturer's directions for materials used. Gypsum Association GA-214, Recommended Specification for Levels of Gypsum Board Finish, should be referred to in order to determine the level of finishing needed to assure a surface properly prepared to accept the final decoration.

All surfaces, including applied joint compound, must be thoroughly dry, dust-free and not glossy. Prime with USG Sheetrock® Brand First Coat Primer or with an undiluted interior latex flat paint with high-solids content. Allow to dry before decorating.

To improve fastener concealment, where gypsum panel walls and ceilings will be subjected to critical artificial or natural side lighting or decorated with a gloss paint (eggshell, semigloss or gloss), the gypsum panel surface should be skim coated with joint compound. This equalizes suction and texture differences between the drywall face paper and the finished joint compound before painting. When a Level 5 finish is required, use USG Sheetrock® Brand Tuff-Hide Primer-Surfacer. See *USG Sheetrock® Brand Tuff-Hide™ Primer-Surfacer* submittal sheet (J1613) for limitations and application instructions.

Please refer to USG literature *Finishing & Decorating Gypsum Panels* white paper (J2010) for more information on finishing panels.

PRODUCT DATA

	UL Type AR
Thickness	5/8 in.
Lengths and Widths¹	48 in. wide—8 ft.-12 ft.
Weight²	2.8 lbs./sq. ft.
Edges	Tapered
Packaging	Two panels per bundle

1. Check with your local USG representative for availability. Other lengths available via special order (minimum order quantities may apply).
2. Represents approximate weight for design and shipping purposes. For specific product weight in your area, contact your local USG representative or call the Customer Service Center at 800 950-3839.

TEST DATA

MOISTURE AND MOLD RESISTANCE

Per ASTM C473, the average water absorption for panels is not greater than 5 percent by weight after two-hour immersion.

In independent lab tests conducted on USG Sheetrock® Brand Mold Tough® AR Firecode® X Panels at the time of manufacture per ASTM D3273, *Standard Test Method for Resistance to Growth of Mold on the Surface of Interior Coatings in an Environmental Chamber*, the panel score was 10.

This ASTM lab test may not accurately represent the mold performance of building materials in actual use. Given unsuitable project conditions during storage, installation or after completion, any building material can be overwhelmed by mold. To manage the growth of mold, the best and most cost-effective strategy is to protect building products from water exposure during storage and installation and after completion of the building. This can be accomplished by using good design and construction practices.

TEST DATA CONT.
ABUSE RESISTANCE

USG Sheetrock® Brand Mold Tough® AR Firecode® X Panels are tested in accordance with ASTM C1629 and are third-party evaluated. The test procedures are summarized below.

Test Standard	Test Summary	Classification Levels	Test Results
Abrasion Resistance ASTM C1629	A sample is placed under a wire brush weighted with 25 lbs. The brush is then cycled 50 times back and forth across the surface. This creates surface wear that is measured to determine the level of abrasion resistance.	Maximum Depth Level 1 = 0.126 in. Level 2 = 0.059 in. Level 3 = 0.010 in.	Level 2
Indentation Resistance ASTM C1629	A 2 lb. weight is raised to a 36 in. height and dropped onto a 5/8 in. hemispherical die that strikes the sample with 72 in.-lbs. of force. The depth of the indentation is measured to determine the level of indentation resistance.	Maximum Depth Level 1 = 0.150 in. Level 2 = 0.100 in. Level 3 = 0.050 in.	Level 1
Soft-Body Impact Resistance ASTM C1629	A 60 lb. leather bag is suspended on a rope and raised away angularly from a sample installed on 2 in. x 4 in. wood framing 16 in. o.c. The bag is raised (in 6 in. increments) and released to impact the sample. The impact energy is calculated based upon the bag weight and drop height where structural failure occurs.	Minimum ft.-lb. (structural failure) Level 1 = 90 ft.-lb. Level 2 = 195 ft.-lb. Level 3 = 300 ft.-lb.	Level 2
Hard-Body Impact Resistance ASTM C1629	A 2 ft. x 2 ft. sample is mounted vertically to a metal frame and impacted with a 2-3/4 in. diameter weighted swinging ram (resembling a sledgehammer). Weight is added in 2.5 lb. increments to increase the impact force. Failure energy is determined when penetration through the face into the frame cavity occurs.	Minimum ft.-lb. (structural failure) Level 1 = 50 ft.-lb. Level 2 = 100 ft.-lb. Level 3 = 150 ft.-lb.	Level 1

Note: USG testing demonstrates that when painted with one coat of primer and two coats of semigloss latex paint, the abrasion resistance for paper-faced gypsum wallboard panels increases to Level 3.

PRODUCT INFORMATION

See usg.com for the most up-to-date product information.

GREENGUARD Certified products are certified to GREENGUARD standards for low chemical emissions into indoor air during product usage. For more information, visit ul.com/gg.

CAUTION

Dust may cause irritation to eyes, skin, nose, throat and upper respiratory tract. Cut and trim with a utility knife or hand saw to minimize dust levels. Power tools must be equipped with a dust collection system. Wear eye, skin and respiratory protection if necessary. If eye contact occurs, flush thoroughly with water for 15 minutes. If irritation persists, call a physician. Do not swallow. If swallowed, call a physician.
 For more information call Product Safety: 800 507-8899 or see the SDS at usg.com.
KEEP OUT OF REACH OF CHILDREN.

TRADEMARKS

The trademarks USG, FIRECODE, FIRST COAT, MOLD TOUGH, TUFF-HIDE, SHEETROCK, IT'S YOUR WORLD, BUILD IT., the USG logo, the design elements and colors, and related marks are trademarks of USG Corporation or its affiliates.

The trademarks IBC and INTERNATIONAL BUILDING CODE are trademarks of International Code Council, Inc.

NOTE

Products described here may not be available in all geographic markets. Consult your USG Company sales office or representative for information.

NOTICE

We shall not be liable for incidental and consequential damages, directly or indirectly sustained, nor for any loss caused by application of these goods not in accordance with current printed instructions or for other than the intended use. Our liability is expressly limited to replacement of defective goods. Any claim shall be deemed waived unless made in writing to us within thirty (30) days from date it was or reasonably should have been discovered.

SAFETY FIRST!

Follow good safety and industrial hygiene practices during handling and installation of all products and systems. Take necessary precautions and wear the appropriate personal protective equipment as needed. Read Safety Data Sheets and related literature on products before specification and/or installation.



COMPLIANCE

Each USG Sheetrock® Brand Mold Tough® AR Firecode® X Panel bears the UL mark as evidence of UL Classifications for fire resistance, surface burning characteristics and noncombustibility. They can be used in UL designs where type "AR" panels are listed. Class A, as defined in International Building Code® (IBC®) section 803.1, flame spread is 15, smoke developed is 5, when tested in accordance with ASTM E84. Complies with ASTM C1396.

SUBMITTAL APPROVALS

Job Name	
Contractor	Date

800 USG.4YOU
 800 (874-4968)
 usg.com

Manufactured by
 United States Gypsum Company
 550 West Adams Street
 Chicago, IL 60661

WB2391/rev. 10-17
 © 2017 USG Corporation and/or
 its affiliates. All rights reserved.
 Printed in U.S.A.

